



LAWRENCE MEMORIAL HOSPITAL

CASE STUDY

PRESENTED BY SHIELD | AUGUST 31, 2020



LAWRENCE MEMORIAL HOSPITAL

LAWRENCE, KANSAS

With the completion of the new West Campus in 2020, Lawrence Memorial Hospital (LMH Health) continues to expand on their mission of providing exceptional patient care for all. This 247,846-square-foot facility primarily offers outpatient services—including surgery, physical and occupational therapy, women’s health center and more.

Shield, in partnership with Pulse Design Group (architect), developed a variety of custom, solid surface solutions for LMH Health’s new facility. Product types ranging from interlocking pass-through casework to humidity-resistant cabinets were designed with efficiency and the safety of patients and employees in-mind.



Operating Rooms

A key improvement to LMH Health’s Surgery Center was the installation of solid surface pass-through casework to their operating rooms. Due to the high-volume, rapid turnover nature of LMH Health’s surgery schedule, efficiency and sterilization were top priority in the development of this product.

With these pass-through cabinets, nurses or supply liaisons can stock for the next surgery while the current surgery is still being performed, most importantly, without “breaking the field” or compromising the sterility of the operating room. Shield’s addition of transparent doors allows the supply captain to see storage levels (items like gauze, sutures, etc.) at a glance; while the pass-through nature of the cabinets enables them to restock immediately, streamlining the process vs. having to wait until the surgery is complete.

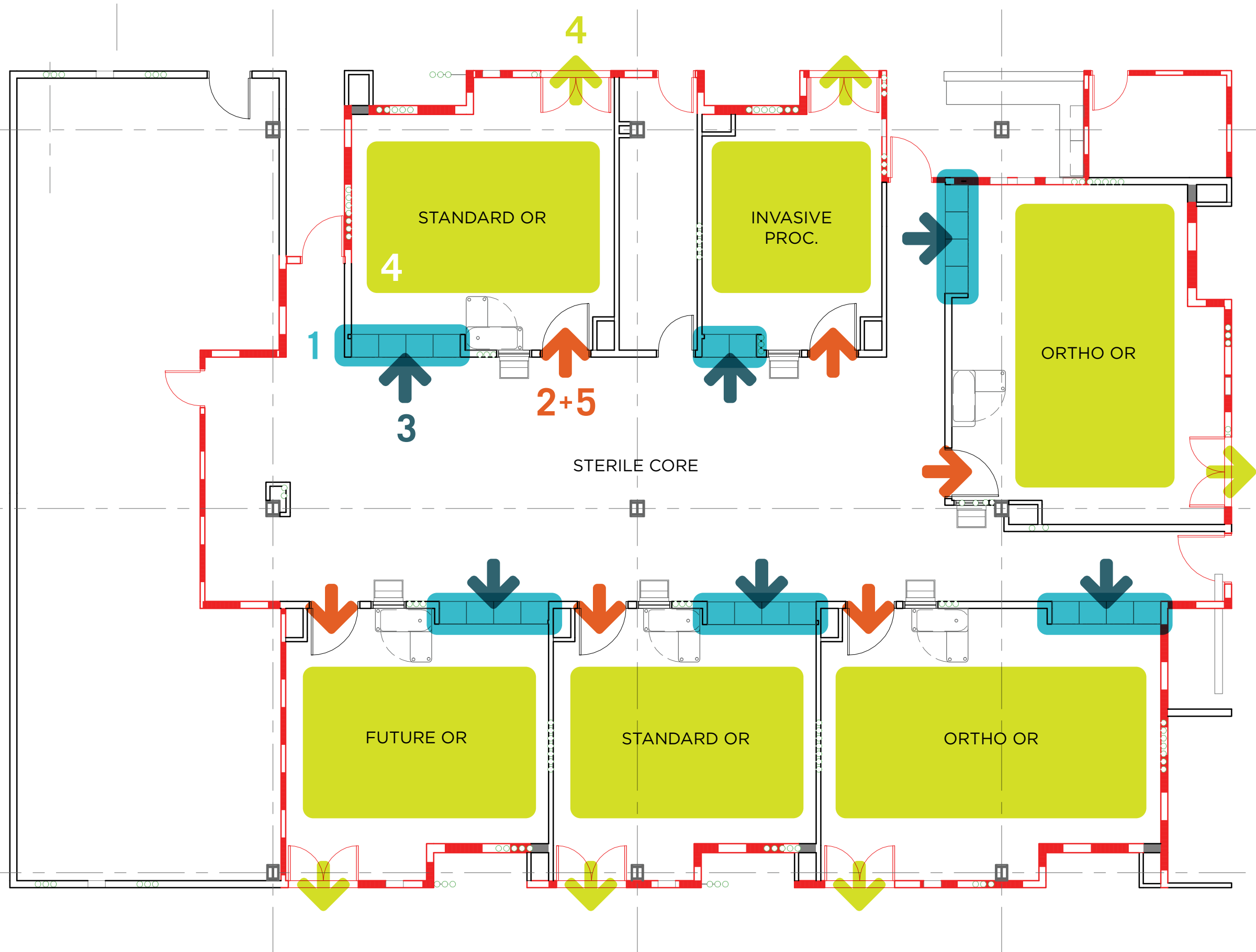


“ People have talked about OR pass-throughs for years, but they haven’t been able to maintain the pressurization and they haven’t had cabinets of a material that helps mitigate risk. **THE SPECIFIC WORKFLOW AND FLOW OF THE SUPPLIES IS THE REVOLUTIONARY COMPONENT...** We would not be able to execute the design effectively without Shield’s solid surface solution.

— Basil Sherman, Pulse Design Group

Besides basic ease of use for the hospital staff, the pass-through casework have a direct impact on the surgery schedule. With a normal lag of 10-20 minutes between surgeries, eliminating stocking the cabinets from the post-op list enables staff to focus on just sterilizing the room, in-turn saving time. By taking back approximately 10 minutes per surgery, four surgeries per day, then LMH Health is able to accommodate one additional surgery per day in each OR.





1 SOLID SURFACE PASS-THROUGH CASES INSTALLED IN EACH OF THE OPERATING ROOMS

2 PATIENT ENTERS THE OPERATING ROOM THROUGH THE DOORS ADJACENT TO THE STERILE CORE.

3 WHILE THE CURRENT SURGERY IS BEING PERFORMED, THE SUPPLY CAPTAIN AND STAFF CAN RELOAD FOR THE NEXT CASE.

— SUPPLY STAFF CAN ALSO PROVIDE MATERIALS NEEDED FOR THE CURRENT SURGERY WITHOUT BREAKING THE STERILE FIELD.

4 AT THE END OF THE SURGERY, THE PATIENT EXITS THE OR. STAFF THEN PROCEEDS TO CLEANING THE FACILITY.

5 THE NEXT PATIENT THEN ENTERS THE OR THROUGH THE DOORS ADJACENT TO THE STERILE CORE.

LAWRENCE MEMORIAL HOSPITAL | OPERATING ROOMS

FLOOR PLAN + PATIENT FLOW WITH THE ADDITION OF SHIELD PASS-THROUGH CASES



Specialty Cabinets

As with all Shield products, the custom cabinetry within LMH Health's new facility is microbial resistant, durable, and easily sterilized to support the health of patients and staff.

Designed specifically for LMH Health, the cabinets within the surgical pathology laboratory (SPL) are a combination of solid surface cabinets with phenolic counter tops installed on top—due to the fact that these counter tops see a lot of wear-and-tear from bulky equipment. The SPL is the primary location for frozen sectioning and analysis services, a space that is notoriously messy—materials are knocked over, spilled, etc.—making it crucial that the furniture is easy to clean. The nature of Shield's fully sealed, seamless products prevent potential cross-contamination or compromising of samples.

Shield cabinets were also installed in the hydrotherapy rooms, used primarily for physical, occupational, or post-op therapy. This part of the facility posed considerable issues for standard products; the rooms host an incredibly high humidity content as their primary use involves a 10 x 10-foot pool with a submerged treadmill. The cabinets designed and fabricated by Shield are essentially waterproof, eliminating the concern for mold growth or deterioration within five, 10 or 20 years.



QUESTIONS?
IDEAS?
JUST WANT
TO CHAT?

SHIELD

1120 ELLERBROOK RD.
NORTH KANSAS CITY, MO 64116
SHIELDCASEWORK.COM | 816.875.3317



PETER RITTMANN

HEALTHCARE SALES MANAGER
913.208.5244
PRITTMANN@SHIELDCASEWORK.COM